



MIDWEST REGIONAL
SUSTAINABILITY
SUMMIT



Green Umbrella
REGIONAL SUSTAINABILITY ALLIANCE

Missed Connections: A Love Letter to Transit Oriented Development



**Mary Jo
Minerich**
GBBN
Architects



**Cam
Hardy**
Cincinnati
Metro



**Sarah
Thomas**
N.E.S.T.



**Nathan
Kempfues**
MoBo Bicycle
Co-op

FRIDAY MAY 12TH, 2023 | 3:30 PM - 4:30 PM

“

The enduring popularity of *Missed Connections* suggests that, although we aren't always adept at noticing them as they happen, our lives are marked by moments like this. Sometimes, if chance has its way, such ephemeral connections change us in long-lasting ways. And when luck fails, *Missed Connections* is there to offer a second chance.

”

Ari Mulgay

Getting a second chance at a once-in-a-lifetime moment

I saw you...



NORTHSIDE

Cincinnati



“STAGECRAFT”
building →



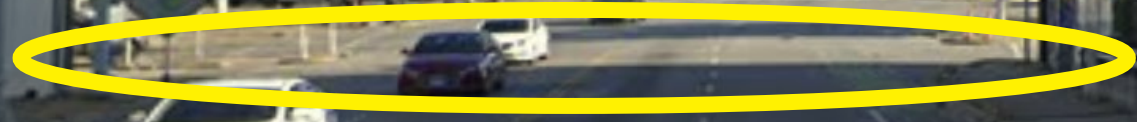
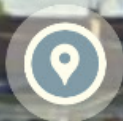
SPEED
LIMIT
25



© 2021 Google

© 2021 Google

There is no routine breast cancer.



KNOWLTON'S
corner

SPEED LIMIT 25

ROAD WORK AHEAD



BIKE LANE
(end)



NO
TURN
ON RED

PUSH
BUTTON
FOR
WALK
LIGHT

17 MI HEALTHY

127
35

TRANSIT HUB
(around the corner this way!)

TRANSIT HUB

(2nd busiest in the city)



OLD LUDLOW

(+Vintage White Castle)



MILL CREEK
(right behind you)



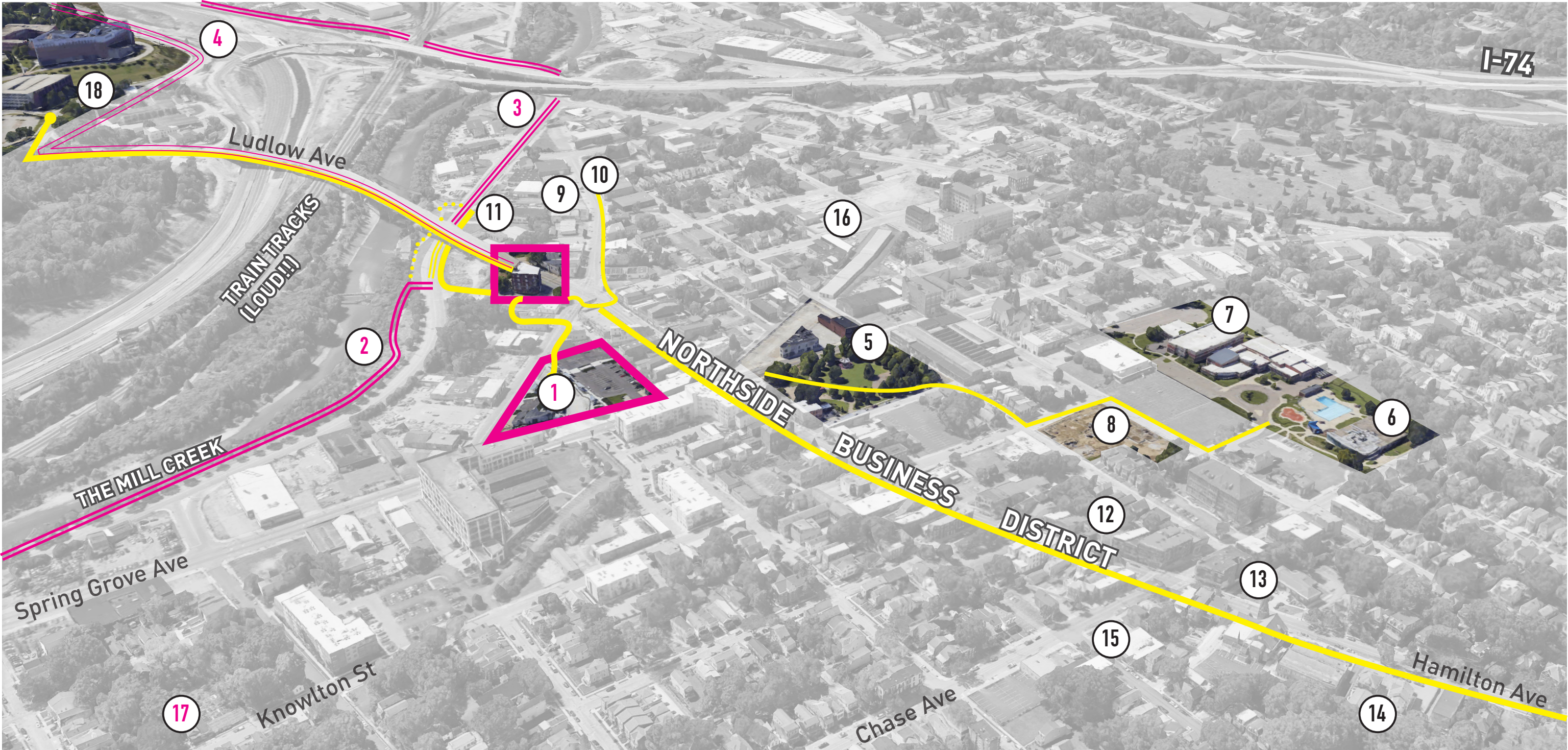
TRAINS

(and I-74/I-75)



did we have
a moment...?





- | | | | | | | | |
|---|-----------------------------------|----|----------------------------------|----|-------------------------|----|-------------------------------|
| 1 | Transit Hub | 6 | McKie Recreation Center | 11 | Northside Health Center | 16 | Par Projects |
| 2 | Mill Creek Greenway Bike Path | 7 | Chase Elementary | 12 | Northside Hardware | 17 | Mobo/Village Green |
| 3 | Access to Spring Grove Bike Lanes | 8 | Penrose/NEST Housing Development | 13 | Happen | 18 | Cincinnati State |
| 4 | Central Parkway Shared Lanes | 9 | Growing Trade | 14 | CAIN | 19 | OTRCH/PLK Housing Development |
| 5 | Hoffner Park | 10 | Visionaries and Voices | 15 | Wordplay | | |







W
O
R
L
D

ATLANTIC

WHEN YOU'VE GOT
SENSHE
NEW Flavor Professional's Visible Care™ Self-Soothing Lotion
Cremosa formula to hydrate your skin with 100% natural

Cincinnati State

SHINE WEST
BREWERY





Old Timber Inn

SWAG
DON'T
COME
CREEP

JAMES
23



Ryan

@Ryan4transit



Taking the 17 to meet for lunch with my brother before the @Reds game today. Nothing better than using a \$4 day pass and not worrying about parking (\$) so I can enjoy being a @cincinnatimetro passenger instead



Marky Mark Samaan @markymarksamaan · Apr 2

Nothing like attending a large sporting event in Cincy by using @cincinnatimetro. 12 minutes from the Northside Transit Center to @fccincinnati, 20-25 minutes to @Reds or @Bengals (including the walk from Government Square). \$4 round trip on 24/7 service, no parking no driving

[Show this thread](#)

12:05 PM · Apr 2, 2023 · 1,099 Views



WELCOME TO
NORTHSIDE TRANSIT CENTER

WELCOME TO
NORTHSIDE TRANSIT CENTER

www.go-metro.com

go*METRO

go*METRO

2021

2020

2020

October 6, 9:30am
R1 Destination
Mt Healthy
R9 Ceteran Northgate



Matt Duffy @matthewjayduffy · Apr 27

...

Something I love about using public transit: the opportunity to encounter and interact with other people. This morning I watched as someone was hand-drawing artwork. Transit is more than simply moving people. It's a place in motion. It's community building.



Wade Johnston @wadejohnston · Mar 4

...

Happy Friday from the 24 bus. I'm riding with Jane, one of [@cincinnati metro](#)'s biggest fans, on our way to preschool! 🚌





Eric H Kearney @EricKearney · Apr 12



Riding @cincinnati metro gives me time to READ I get through my @CinciHerald @nytimes @WSJ and @917wvxu FEEDS The bus is quiet and CLEAN There's little glare on my SCREEN Give it a try! ; it's great you'll have to CONCEDE #buspoet



cincinnastywoman 17h



TRANSIT CENTER ROMANCE



NEST - Northsiders Engaged in Sustainable Transformation

16 February · 🌐

Northsiders, learn more about Hamilton Avenue's designation as a future Bus Rapid Transit route! RSVP here to this free event (meal included) in Northside on 2/22: www.metrobrtstudy.com

REINVENTING METRO!

Bus Rapid Transit Workshops

Tues., Feb. 21 | 5:30-7 p.m.

College Hill Rec Center
5545 Belmont Ave.

Wed., Feb. 22 | 5:30-7 p.m.

The Factory
1546 Knowlton St.

Thurs., Feb. 23 | 5:30-7 p.m.

Corryville Rec Center
2823 Eden Ave.

Mon., Feb. 27 | 5:30-7 p.m.

Community Action Agency
1740 Langdon Farm Rd.

Register: www.metrobrtstudy.com



Cincinnati Metro

Send Message



Cincinnati Metro

13 February · 🌐

We know WHERE we'll be building our new bus rapid transit (BRT) corridors... Reading Rd. & Hamilton Ave. Now, we need your help to design them!



NEST - Northsiders Engaged in Sustainable Transformation is with

ConstructConnect and 2 others.

17 February · 🌐

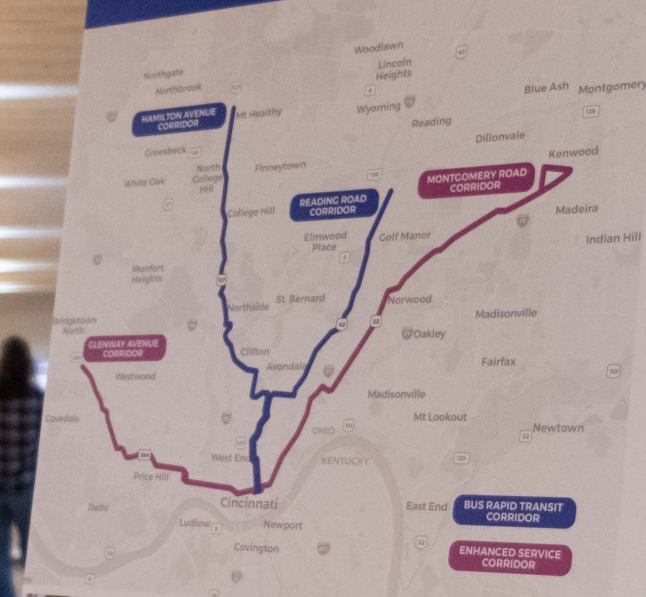
Join us! Feb 25th - 9am for a Community Workshop: Knowlton's corner & Beyond. One topic of conversation for the day is how to connect the Mill Creek Greenway trail to the Northside business district. Help us get creative, we want your input! Details & RSVP here: <https://tinyurl.com/knowltons-corner>



REINVENTING
METRO
BUS RAPID TRANSIT STUDY

INTRODUCING BUS RAPID TRANSIT

Bus Rapid Transit (BRT) combines the fast, efficient, comfortable character of rail transit with the flexibility of traditional bus service.



BRT offers:

- Frequent, convenient service (every 10 minutes), plus late night and weekend service
- Limited stops, up to a mile apart
- Smart traffic signals and dedicated travel lanes that prioritize BRT progress
- Attractive, clean, comfortable buses and stations with Wi-Fi and charging ports
- Real-time displays showing when buses are due
- Bigger buses with more room that can accommodate wheelchairs, mobility devices, strollers, and bikes
- Boarding and exiting through any door
- Fully-accessible stations and buses that allow same-level entry into the vehicle
- Paid-in-advance fares to streamline boarding and reduce wait times

Enhanced service corridors will not have BRT service but will include:

- Improved safety features at bus stops, on buses
- Improved shelters at bus stops (more seating, better lighting, improved access)
- More weekend service
- Signal priority at key intersections

Learn More At



MetroBRTStudy.com

REINVENTING METRO! 2015-2016 TRANSIT STUDY

STATION TYPES



REINVENTING METRO! 2015-2016 TRANSIT STUDY

SEATING

REINVENTING METRO! 2015-2016 TRANSIT STUDY

SIGN TYPES

REINVENTING METRO! 2015-2016 TRANSIT STUDY

STATION AREA PLANNING



STATION AREA PLANNING

Tell us what amenities you'd like to see around each station location.

- Place a dot matching the color of the amenity type below next to your preferred location
- If you add a dot for "Other," please use an index card to write down your desired amenity - don't forget to label the station you are referring to
- If you have questions, please ask a project team member

- | | |
|---|---|
| <input type="radio"/> Housing | <input type="radio"/> Civic Use |
| <input type="radio"/> Retail | <input type="radio"/> Greenspace/Recreation |
| <input type="radio"/> Grocery/Pharmacy | <input type="radio"/> Restaurants/Cafes |
| <input type="radio"/> Daycare | <input type="radio"/> Transit Center |
| <input type="radio"/> Mixed Use (residential/retail/office) | <input type="radio"/> Other |



photo by Tyler Gentry



photo by Tyler Gentry



photo by Tyler Gentry

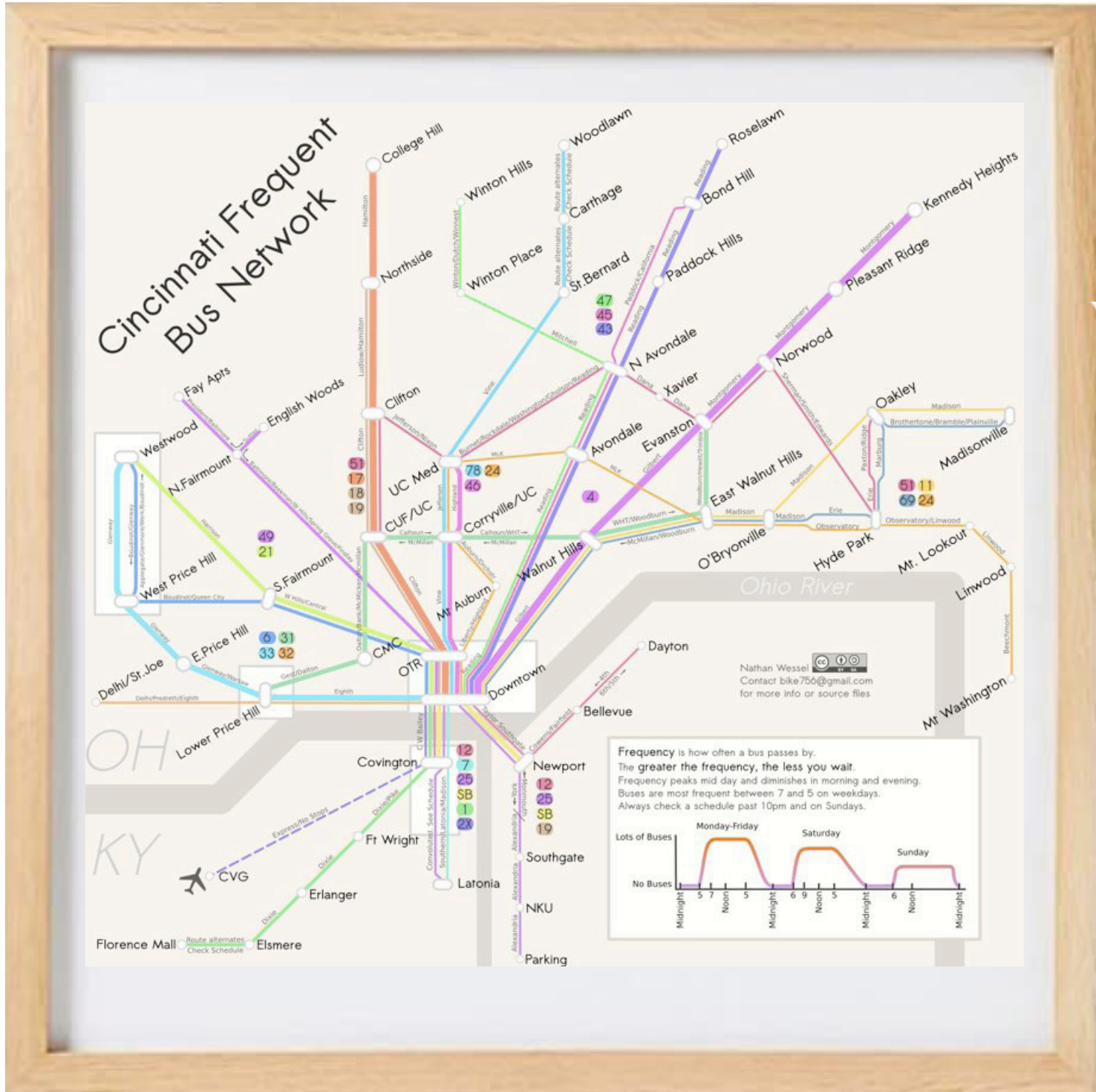


call me!











TRAILHEAD DIRECT
PARK. RIDE. HIKE.

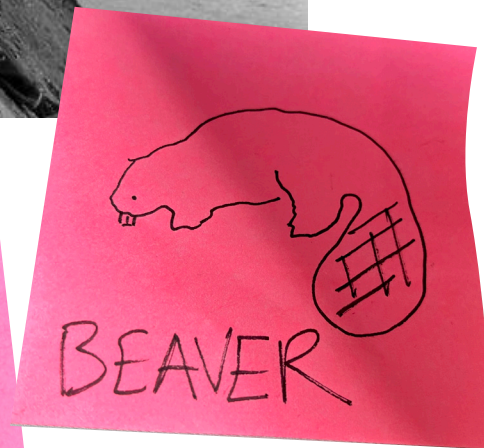


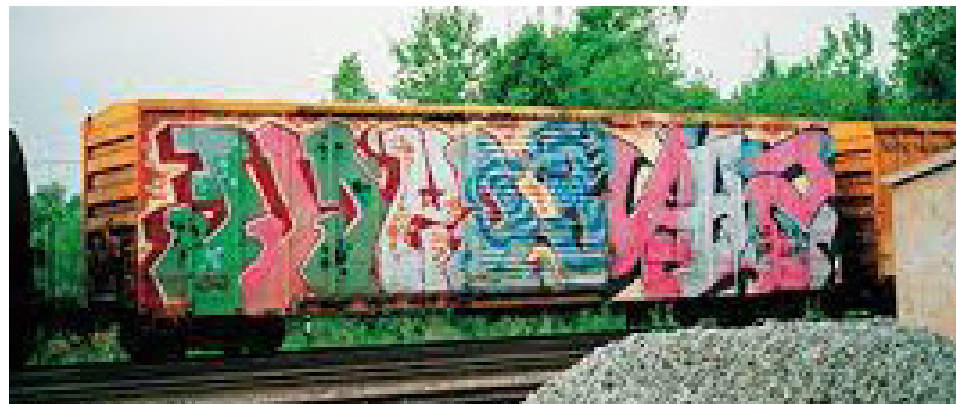
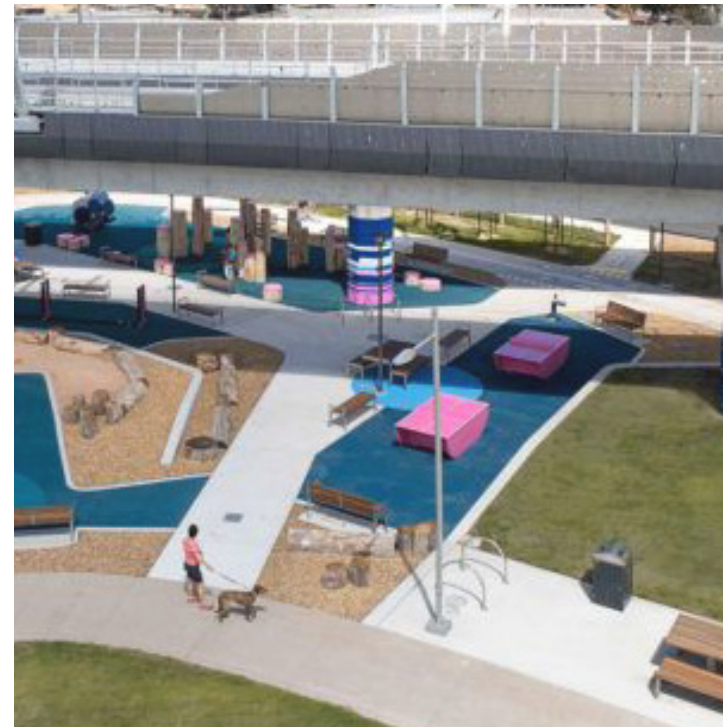
Paid for by King County Metro and Trailhead Direct sponsors.

King County
METRO













“

It's just not fair, I remember thinking as he stood right next to me on the packed rush hour bus. How can I interact with countless people online only to find a great guy on the bus, listening to his headphones?

”

Claire Forrest

I Womaned Up On Craigslist Missed Connections

Q & A

